



Aligned Development Strategies, Inc



Technical Architecture Document

The Aligned Development Strategies, Inc. (ADSI) Project Management Office e-Partner (PMO ePartner) is a web-based application, which can be used by organizations that are implementing current methods in Project Management, e-Learning, Enterprise Reporting and Strategic Planning.

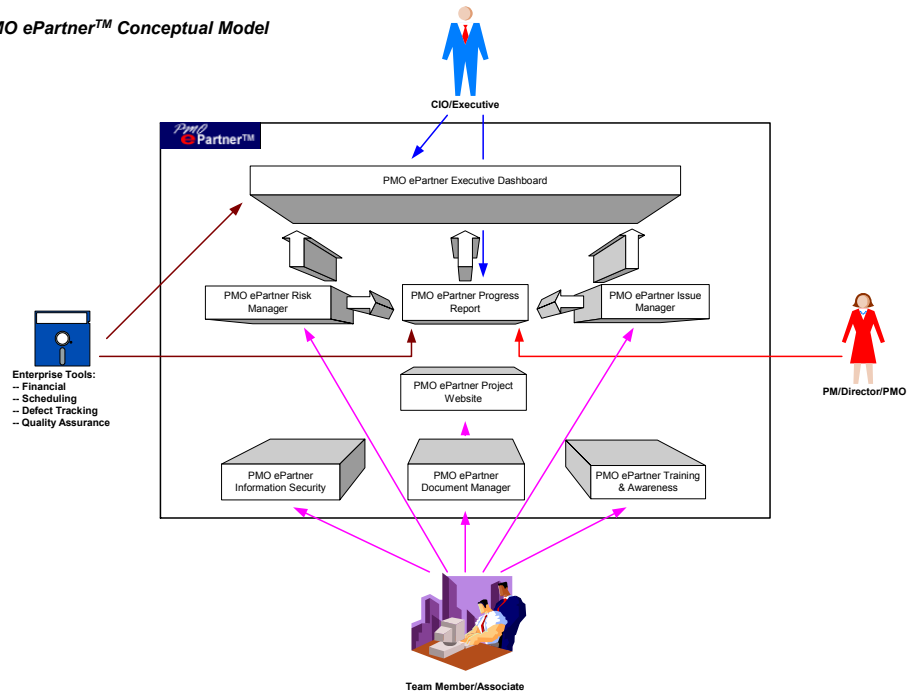
The Portal supports the communication needs of an organization's project office by providing a centralized repository of company data which is derived from various sources (systems or users) within an organization.

The PMO ePartner is a set of core modules which can be customized and extended based upon an organization's specific requirements.

In the PMO ePartner environment, everyone on the integrated product team can benefit and the organization's strategic interest is served.

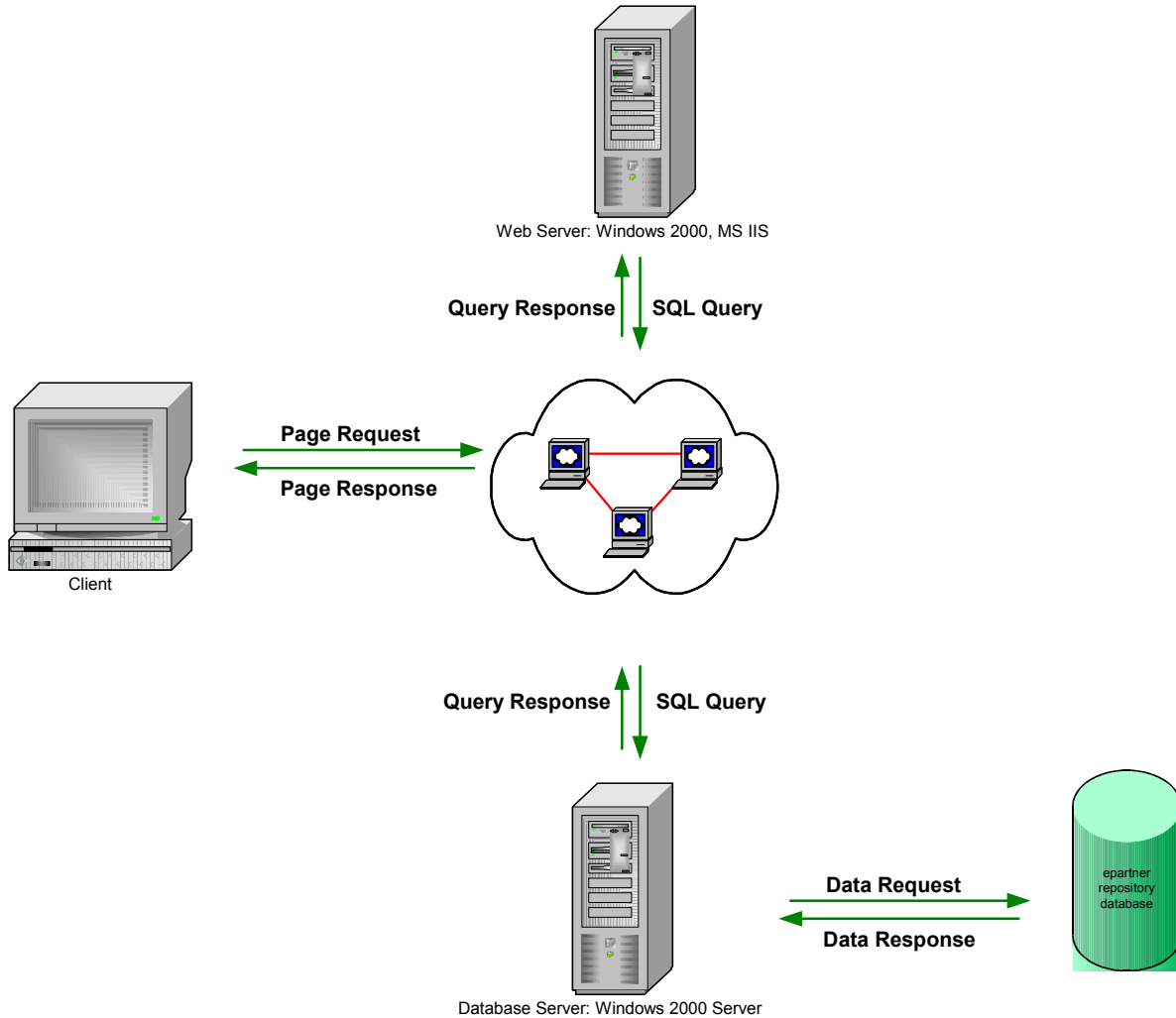
Project Managers can report timely project status, manage risks and issues etc., Senior and Executive Management can gain insight into project status on relative information, such as cost, schedule, quality, risks and strategic alignment, view performance measures, and manage the project portfolio enabling timely decision making. Team members can access project documentation, reusable standards and templates, report issues, risks and track action items.


PMO ePartner™ Conceptual Model





System Architecture

PMO ePartner TM employs a thin client architecture. The web server and database server handles the majority of the processing with HTML served up to industry standard browsers. Selected components are deployed on the web server and a limited number of stored procedures are also implemented in the RDBMS.



| Technology Area | How Implemented |
|-----------------|---|
| Client |  <ul style="list-style-type: none"> • Any JavaScript-enabled browser - Internet Explorer 4.0 or higher and Netscape Navigator 4.0 or higher • HTML and JavaScript • Windows 95, 98, NT, 2000, XP • No additional plug ins needed |
| Reporting | <p>No specific reporting tool required out of the box. The database is MS-SQL Server , therefore compatible with many reporting products, such as:</p> <ul style="list-style-type: none"> • Crystal Reports • Business Objects • MS-Access |
| XML | <ul style="list-style-type: none"> • Supports XML for customized interface extensions. No XML built into application. |
| E-mail | <ul style="list-style-type: none"> • Microsoft Exchange • Lotus Notes • Compatible with any other SMTP based e-mail systems |
| Web Server | <ul style="list-style-type: none"> • Microsoft Internet Information Server on Windows NT Server or Windows 2000 |

| | |
|------------------|--|
| Server Platforms | <ul style="list-style-type: none"> • Windows NT, Windows 2000  |
| Memory | <ul style="list-style-type: none"> • 256MB Minimum on clients (512MB Recommended) • 512MB Minimum on servers (2 GB Recommended) |
| Disk Space | <ul style="list-style-type: none"> • 1 GB for database on database server • 50 GB for web application, documents and other content on web server |
| Database Server | <ul style="list-style-type: none"> • Microsoft SQL Server 7.x • SQL Server 2000  |
| Scalability | <ul style="list-style-type: none"> • Can support unlimited number of users based upon server hardware, memory and network configuration. • Can be scaled using multiple servers with load balancing • A single server can support tens of thousand of users concurrently. |
| Development | <ul style="list-style-type: none"> • Active Server Pages • HTML • JavaScript • Visual Basic Components • MS-SQL Server Stored Procedures |